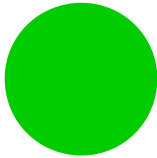
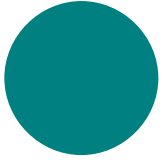




# Bettridge Centre



**Bettridge Centre**

Coastal Park

Newtonhill

Aberdeenshire

AB39 3UL

Tel: 01569-731320

[www.bettridgecentre.org.uk](http://www.bettridgecentre.org.uk)

Reg Charity No: SCO02063

## Annual Review 2017

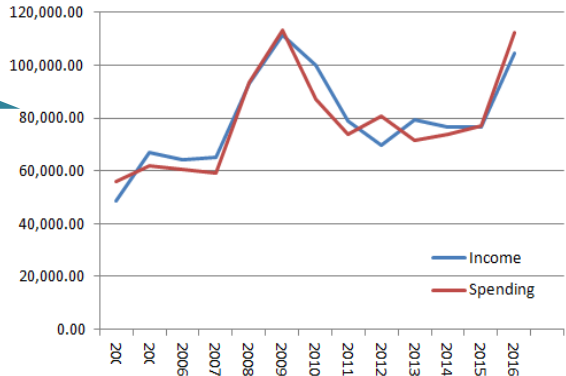
## A centre for excellence

The Bettridge Centre is a large, wholly independent, community owned and run multi-purpose leisure centre in Newtonhill, Aberdeenshire.

Our aim is to provide local people with the best sports, arts, social and community facilities in the NE of Scotland. We pride ourselves on providing a high quality, friendly, welcoming service at a price our customers can afford.

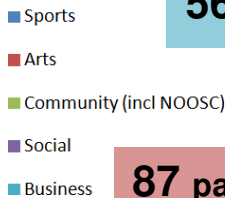
## Our year in numbers

**Income**  
**£105,600**  
**Spending**  
**£114,000**



### Football

**1,200 visitors every week**  
**56,000 over the year**



Thank you for a brilliant venue and help with Jessica's 6th birthday. She had a ball. Excellent!

**87 parties**  
**2,500 happy adults & children!**

A fab night in a fab place.... Brings back such great memories of all the events we went to fundraising for the hall. A very special place to hold a party!

**£10,800**  
**grant**  
**funding**

How to Make a Killing in Bollywood was a great night at the Bettridge Centre. What a treat to see such a quality performance on our doorstep!

**6 committee members**  
**11 staff members**  
**16 volunteers**  
**35 user groups**

A fantastic facility run by volunteers devoted to creating a community and an essential part of Newtonhill's identity. Thank you to you all.

**8 NEAT arts events**  
**360 audience members**

# Our year in pictures

Summer@theBettridge



The Critter Keeper



Puppet Gang

Zootopia



Dinosaur Detectives



Third Degree Burns



Willie the Wicked Wolf

North East Arts Touring

CREATIVE LAND SCOTLAND  
ALBA | CHRUTHACHAIL

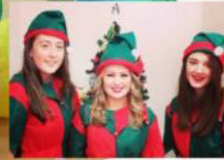


How to Make a Killing in Bollywood



DIRTY DANCING

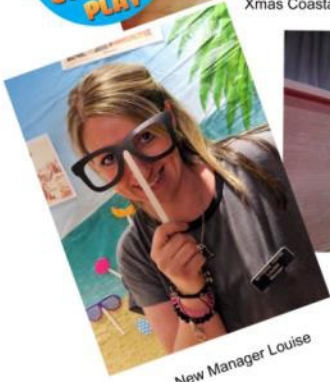
30th Anniversary



Staff at Xmas Coastal Paly



New mats for Indoor Bowling Club



New Manager Louise



Small Hall Refurbishment



## Bettridge Centre 2016 – 2017

This year has been an extremely challenging one. The continued oil downturn has seen individuals and families having to tighten their belts, making it more difficult to attract audiences for our events and seeing some user groups struggling to continue with diminishing numbers.

The bad news is that we ran a deficit last year of £8,302. This figure isn't as large as it looks as we installed new fire doors in May (£3,180) for which we had previously received grant funding at the end of 2015. We also bought new scaffolding (£2,472).

The remaining deficit was caused primarily by higher staffing costs, as a new manager, development officer and cleaner were employed. This decision was made because the committee felt strongly that the centre needed to be managed more effectively and efficiently day to day, and efforts needed to be made to attract more business and much needed grant support.

The good news is that the centre is already showing the effects of better management, of proper cleaning and regular maintenance and of more effective promotion and grant application - and it's encouraging to note that although our costs have increased, our income has also increased.

We were disappointed to have to raise rents at the beginning of 2017 - being all too aware that this put added pressure on our loyal users - however this measure, combined with very careful management of staffing levels and utility costs, has meant we have achieved a degree of financial stability which means we face the coming year with much more confidence than last.

**Footfall:** We estimate over **56,000** people came through our doors this year: this means approximately **1,200** people use the centre every week during term-time, with community and sports activities the most important part of what we do. Analysis of post code data confirms that we primarily serve our immediate community of Newtonhill and Muchalls, but we increasingly have regular users from Chapelton, Portlethen, Stonehaven and Aberdeen.

**Staffing:** We currently employ ten part-time members of staff plus one full time manager. We also have great support from a number of volunteers - especially **Paul Brain, John Thompson** and **Marty Scutt** - who have been tireless in their efforts to help maintain the fabric of the building.

In addition, we have been very fortunate to have the ongoing support of the **Community Justice Team**, headed up by **Hazel Dalgarno** - they have spent many days painting the centre, clearing out the garage and delivering leaflets for us.

**Grants:** We were delighted to win £11,353 from the **Aberdeenshire Area Committee** and the **Meikle Carewe Wind Farm Fund** to refurbish the Small

Hall at the end of last year. New LED lights were installed and the wooden floor has been sanded and re-varnished - it now looks like a different place and it no longer feels like you're swimming at the bottom of the sea!

Another source of income has been the proceeds of the fabulous Christmas Lights display run by **Kirsty MacArthur** and family. Their very generous donation of £635 went towards buying a new carpet for our Indoor Bowling Club and more equipment for Coastal Play and Fit Fun.

Our committee also ran the very popular Bells at the Bettridge and the Christmas Ladies Night, which raised over £2,800 to boost centre funds.

**Events:** In an effort to attract more visitors to the centre and to expand our arts provision, we have been working with **North East Arts Touring (NEAT)** to stage small-scale, but regular theatrical seasons. We have attracted over 360 people to see productions ranging from Fiona Knowles' one-woman show to the exuberant *How to Make a Killing in Bollywood*.

We also ran our first ever **Summer @ the Bettridge season** in 2016, which was attended by over 400 children and adults.

**The future:** We are very excited to announce that 2017-18 is the year of re-developing the garage. We have commissioned initial drawings from **MAC Architects** and started the community consultation process. It's essential that whatever we do helps us fulfill our charitable remit and is fully supported by our local community. Drawings and plans will be up in the centre for everyone to look at - we look forward to hearing everyone's feedback and welcome your involvement, ideas and suggestions.

This is a very ambitious undertaking which we hope will benefit the whole community. We have no guarantee we will win funding, but we believe the future of the centre as an independent, sustainable business depends on us being able to use all the space we have at our disposal to generate income and the time to make that happen is now.

This is particularly important in the light of the major development at **Chapelton**, which will substantially increase the number of people using the centre over the next few years.

In other exciting news, we are in discussions with **AWPR** with regard to their funding the re-surfacing the car park and we've also been lucky enough to be nominated for a **Tesco Bags of Help** grant to enable us to re-paint the lines in the Main Hall and - if we win - buy new goals for our football and netball clubs.

And many thanks go to **Total E&P UK Ltd** offshore colleagues who have voted to make a donation to the centre - we don't yet know how much.

**We'd like to thank all our users, volunteers and staff for helping us get through what has been an interesting 12 months. Here's to the next 12!**

## 2017 – 2018

Our aims for the coming year are:

- To weather current economic conditions by continuing to provide first class local sports, arts, and community facilities at an affordable cost
- To increase the number of people who use the centre, the amount of time the centre is used and the variety of activities we offer
- To recruit more volunteers to help us continue to develop
- To be the focal point for community development in Newtonhill and to continue to build on our strong partnerships with local organisations
- To take an entrepreneurial approach to ensuring the centre develops sustainably into the future by re-developing the garage and improving the car park
- To train and develop our staff to deliver the best possible service to our customers
- To continue maintaining the fabric of the building to ensure the centre remains an attractive, welcoming and safe place to be
- To continue to develop the centre's arts programme and attract good audiences to top quality performances from both professional and amateur companies



We are very grateful for the support of the following organisations:

